



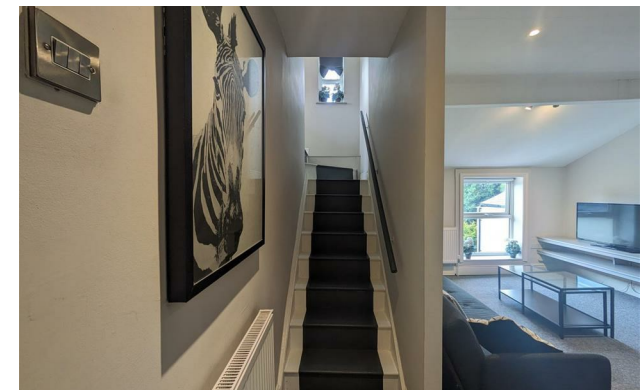
jordan fishwick

MANCHESTER
Oak Road



Oak Road, Manchester, M20 3DA

£1,150 Per Calendar Month



The Property

*** AVAILABLE NOW *** A top floor duplex apartment with elevated views and forming part of an elegant Victorian conversion in a popular location on the borders of West Didsbury and Withington. Perfect for a single occupant or couple only. In outline:- Communal entrance hall and staircase to the second floor, private entrance hallway, lounge/dining room with stairs to the fitted kitchen, spacious bedroom and bathroom with modern three piece suite. In addition, there is ample residents off road parking. To view please contact our Didsbury office

View our Virtual Tour Here - <https://youtu.be/b6WBMZ2-E1c?si=JqHj10gImKB7680d>

EPC Rating - D // Council Tax Band A

Directions

M20 3DA



- Available Now
- One Double Bedroom
- Duplex Apartment
- Modern Kitchen & Bathroom
- Ideal for Single Occupant or Couple
- Popular Location of Withington & Didsbury
- Close to all Local Amenities
- Off Street Parking
- Council Tax Band A
- EPC Rating D

Postcode - M20 3DA

EPC Rating - D

Floor Area - sq ft

Local Authority - Manchester

Council Tax - A





These particulars are believed to be accurate but they are not guaranteed and do not form a contract. Neither Jordan Fishwick nor the vendor or lessor accept any responsibility in respect of these particulars, which are not intended to be statements or representations of fact and any intending purchaser or lessee must satisfy himself by inspection or otherwise as to the correctness of each of the statements contained in these particulars. Any floorplans on this brochure are for illustrative purposes only and are not necessarily to scale.

Offices also at: Wilmslow, Macclesfield, Hale, Sale, Chorlton, Glossop, Manchester & Salford

757-759 Wilmslow Road, Didsbury Village, Manchester

0161 445 4480

didsbury@jordanfishwick.co.uk
www.jordanfishwick.co.uk